



# Rancho Simi Trail Blazers



## THE NORIEGA TRAIL

In 1858 the federal government surveyed the Simi Valley and other areas to establish the Township and Range system, complete with section numbers. The survey was horizontally precise. The map is exhibited on the wall of the northernmost room of the Simi Adobe at the Strathearn Historic Park. At the time of the survey, Jose De la Guerra still owned El Rancho Simi. On the map is shown a trail between the Simi Adobe ("Sime Ranch House") and the De la Guerra Adobe ("Noriegas Tapo"). The trail ran down Tapo Canyon, then westerly north of the first ridge on the northern side of the valley, just below the Whiteface escarpment ("Cuchilla de Huarache") through what is now the Lost Canyons Golf Courses, down Dry Canyon to its mouth (north of the Simi Valley Hospital), then hugged the foot of the mountains westerly to the mouth of Sand

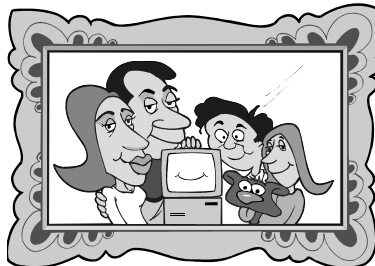
Cont. on page 2 Col. 1



Valentine's Day, Feb.14 th.

### RSTB CLUB MEETING

The monthly club meeting will be held at the Community Center  
 In the B-1 Room  
 1692 Sycamore Drive  
 At 7:00 PM  
 On  
 Wednesday, February 21th.



### WELCOME NEW MEMBERS

Nina, Paige, Gille & Peter  
 Nielsen  
 &  
 Gary Valle

## JANUARY TRAIL WORK PARTY

We had a small work party on the lower Stagecoach Trail in Corriganville for the January Trail Work Party. The day was clear and cold as we started work in the shade but soon become warmer as we worked. The ground was still damp from the previous weeks' rain and it was a real joy to dig without raising clouds of dust. We repaired rain damage, widened the trail path and repaired switchbacks. We worked from 8:00 AM-12:00 PM and as usual met at Chuy's on our way home. Many thanks to the following workers:

Arlene Altshuler, Mike Kuhn, Louise Pomes and John Sabol

The next work party will be held Saturday February 17, 2001, on the Hummingbird Trail. We will meet on Kuehner Drive just north of the 118 freeway at 8:00 AM and work to 12:00 PM. Hope to see you there.

John Sabol  
 Work Parties Chair

John Sabol

Canyon (west of Erringer Road), and finally south-westerly to the Simi Adobe ("Francisco de la Guerra y Noriega").

This trail represented the shortest route between the two adobes and included several sources of water between Tapo Canyon and the head of Dry Canyon. It also was the most logical and well watered route between the historic Chumash villages of *Ta'apu* and *Simi'*. Since nearly all of the residents of Simi Valley at that time were Chumash Indians, it undoubtedly followed the path of the Indian trail between the two villages. The increased opportunity for water was important, because during the prehistoric period, the only source of transportation was by foot. Walking remained a primary source of transportation during the Spanish/Mexican period.

A trail seems to have existed from that trail near the divide between Tapo and Dry canyons which extended to the north over the first saddle in the Whiteface escarpment (Cuchilla de Huarache) east of Whiteface itself. That trail represented the shortest

way into "the Tripas." (*Tripas* is a Spanish term which refers to the interior of something - in this case refers to the large interior valley extending west-erly from the Gillibrand sand and gravel operation.) A rock cairn of unknown origin was located near the trail junction.

We don't have a clue as to the Chumash name of the trail. The trail connected the villages of *Simi'* and *Ta'apu*, however, a *Simi'* and two *Ta'apu* trails already existed. It is still possible that the trail was also referred to as the "*Ta'apu*" after the village that it went to. After all, *Ta'apu* was the largest village in the area, with a population that may have been about twice that of *Simi'*. The village of *Ta'apu* was the only village in the Simi with a resident chief ("*wot*"). For convenience, I here refer to the trail by the maiden name of Jose de la Guerra's mother - a seemingly inappropriate application by Anglo-American settlers.

The Lost Canyons Golf Courses now occupy that route off of Tapo Canyon and through Dry Canyon. So, you have to be a golfer to

## GENERAL MANAGEMENT PLAN FOR THE SANTA MONICA MOUNTAINS RECREATION AREA

The draft management plan for the Santa Monica Mountains Recreation Area (SMMRA) is now available for public comment. This plan contains concepts that are designed to serve the interests of various users of the 150,000 acres of the SMMRA for the next 15 to 20 years. Plan options include 1-No Action 2-Preferred 3-Preservation 4-Education 5-Recreation. This is your opportunity to make your wishes known.

The plan is available through the Internet on the National Park Service's web site: <http://www.nps.gov/samo>. A hard copy may also be obtained by calling (805) 370-2301.

Five public workshops will be held the week of February 5 that will allow individuals the opportunity to discuss the plan options. Workshop locations, directions, and times will be announced in the local papers, posted on the Internet site mentioned above, or obtained by calling the National Park Service Visitor Center at (805) 370-2301.

The deadline for comments is February 28, 2001. Letters and postcards should be mailed to Superintendent, Santa Monica Mountains National Recreation Area, 401 W. Hillcrest Drive, Thousand Oaks, CA 91360-4207.

John Sabol

Local meeting will be held Feb. 9th. at 3 to 5 p.m. Held at National Park Headquarters, 401 W. Hillcrest Dr. in Thousand Oaks

370-2301

## SPRING WILDFLOWER WALKS

During the Spring our local hills will be alive with wildflowers. It is the best time for viewing the great variety of native plants in our area. This Spring the Rancho Simi Trail Blazers will lead four free wildflower hikes on local trails. The leaders of each hike are well versed in the wildflowers of the area. The hikes are intended to stop frequently to discuss the flowers that can be seen at the time and to answer everyone's questions. The leaders are also prepared to discuss other aspects of the natural history and geology of the area.

The first hike will be held on Sunday, April 8, at 2:00 p.m. on the Chumash Trail. Participants will meet at the northern end of Flanagan Drive. Flanagan is the first right hand turn off of Yosemite Avenue north of the 118 Freeway. Parking is available along the eastern side of the street. The hike will extend approximately 1.5 miles up the trail and return by the same route.

The second hike will be held on Sunday, April 15, at 2:00 p.m. on the Hummingbird Trail. Participants will meet along Kuehner Drive north of the 118 Freeway. The hike will extend about 1.5 miles up the trail and then return by the same route.

The third hike will be held on Sunday, April 29, at 2:00 p.m. along the Rocky Peak Trail. Parking is available on both the northern and the south-

ern side of the 118 Freeway at the Rock Peak Interchange. To get there from Simi Valley take the Kuehner Drive south to the Old Santa Susana Pass Road and from there to the top of the Santa Susana Pass. Under state law, parking is not allowed on the overpass. The hike will extend approximately 1.5 miles up the trail and will return by the same route.

The fourth hike will be held on Sunday, May 20, at 2:00 p.m. in Corriganville Park. Hikers will meet in the parking lot at the eastern end of Smith Road. The hike will be approximately 1.5 miles in length.

Participants should dress for the weather, wear good walking shoes or boots, sun screen, hats and bring one to two pints of water for each person. The hikes will be on well maintained trails that are also shared with bicyclists and an occasional equestrian. There is no fee for these hikes, and they are available to anyone who is reasonably physically fit. Questions should be directed during the evening hours to Mike Kuhn (805) 583-2345.



Bush  
Sunflower

## BUSH SUNFLOWER

California Encelia or Bush Sunflower (*Encelia californica*) is a sprawling woody perennial shrub from two to five feet high. It has bright yellow flowers with a dark center. This is a member of the Asteraceae family. What appears to be a single flower is actually a cluster or head of flowers. The pedals are each a ray flower and the center is made up of hundreds of disk flowers. The stems are covered with grayish-white fine hairs. It is found in the Coastal Sage Scrub and the Chaparral.

### ALL RSTB MEMBERS

Check your mailing label on your RSTB Newsletter for **renewing** your **Yearly Membership**. Renewal Month and Year is found after your name on the Newsletter Address Label



# FEBRUARY

2001



Sun	Mon	Tue	Wed	Thu	Fri	Sat
				<b>1</b> Chumash Hike at 6pm See schedule 1st Quarter Moon	<b>2</b>	<b>3</b> Cold Creek Valley Hike Read Schedule
<b>4</b> Rocky Peak Trail Hike Meet at 4pm See schedule	<b>5</b>	<b>6</b>	<b>7</b>	<b>8</b> Chumash Hike at 6pm See schedule  Full Moon	<b>9</b>	<b>10</b> Happy Birthday Heather Brewer  Eagle Spring Loop Hike See Schedule
<b>11</b> Rocky Peak Trail Hike Meet at 4pm See schedule	<b>12</b>	<b>13</b> Happy Birthday Charles P. Portoghesi	<b>14</b> Happy Birthday Doug Marsh   Valentine's Day	<b>15</b> Chumash Hike at 6pm See schedule  Last Quarter Moon	<b>16</b> Happy Birthday Darold L. Farr	<b>17</b> Happy Birthday Jessica Marnier  Hummingbird Trail Work Party See Schedule
<b>18</b> Rocky Peak Trail Hike Meet at 4pm See schedule	<b>19</b>	<b>20</b> Happy Birthday Mary Ann Campbell & Steve Schmidt	<b>21</b> Happy Birthday Carrie Brewer  RSTB Club Monthly Meeting See Page 1	<b>22</b> Happy Birthday Dan McDougall  Chumash Hike at 6pm See schedule	<b>23</b> New Moon	<b>24</b> Happy Birthday Connie Ankom  Palo Comado Canyon Hike See schedule
<b>25</b> Happy Birthday David Siefert  Rocky Peak Trail Hike Meet at 4pm See schedule	<b>26</b>	<b>27</b>	<b>28</b> Happy Birthday Amy Young			



**RANCHO SIMI TRAIL BLAZERS**

EXECUTIVE CHAIR:	MIKE KUHN	HM (805) 583-2345 WK (805)583-6776
TREASURER:	BILL FUNK	HM (805) 527-9339
PARK DISTRICT LIAISON:	COLLEEN JANSSEN	OFFICE (805) 584-4400
WORK PARTIES CHAIR:	JOHN SABOL	HM (805) 583-2541
WORK PARTIES VICE CHAIR:	BOB ALTIERI	HM (805) 526-6749
HIKING CHAIR:	ARLENE ALTSHULER	HM (805) 581-9735
WAYS & MEANS CHAIR:	MARTY RICHARDS	HM (805) 526-4414
WAYS & MEANS VICE CHAIR:	CONNIE ANKROM	HM (805)526-2747
OUTDOOR EDUCATION CHAIR:	JIM RILEY	HM (805) 522-4268
COMMUNICATION / PUB.CHAIR:	BYERS (JOHN) DOWNEY	HM (805) 526-8588

~~-----cut out and return with your payment-----~~

**MEMBERSHIP**

Please enroll me as a New ( ) or Renewing ( ) member of the Rancho Simi Trail Blazers for the annual donation fee of:

Single.....\$10

Family..... \$15

Name(s) \_\_\_\_\_ Address \_\_\_\_\_

\_\_\_\_\_ Birth Mo. \_\_\_\_\_ Day \_\_\_\_\_ Phone wk/hm \_\_\_\_\_

How did you find out about the RSTB \_\_\_\_\_

Please make out tax deductible member dues check for the year Sept.-2000/Sept.-2001 to:

**“Rancho Simi Foundation”** mail it to **“RSTB, P.O. Box 630399, Simi Valley, Ca 93063-0399**

Please list any extra names and birthdays of more than one member (Day & Month Only)

Check out our Web Site at ...<http://rstb.homestead.com>



**RSTB**

**P.O. Box 630399  
Simi Valley, CA 93063-0399  
805 584-4400**

U.S. Postage