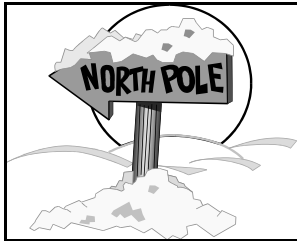




Rancho Simi Trail Blazers



THE SIGHTING ROCK

Above the southeastern side of Simi Valley, on the Sage Ranch of the Santa Susana Mountains Conservancy, is a massive sandstone outcropping, which looks a bit like the bottom of a clothes iron as seen from the valley. At times during the prehistoric settlement period of Simi Valley, perhaps thousands of years, that rock appears to have been used as a sighting device during the winter solstice ceremony of the Chumash Indians. That ceremony was the most important religious event of the year in that it was critical to the rebirth of the sun and the renewal of life.

Four ceremonial features, perhaps best characterized as "shrines," have been identified in the foothills above the northwestern end of the valley. Only one of those features still exists. However, with three of the feature, mathematical analyses, using spheroidal geometry, of sightings from those features, through an intermediate notch in

Cont. on page 2 Col.1



Holiday Potluck RSTB Christmas Party

Last Year we had a great time at our party. We had many people come and hope even more can make it this year. We brought delicious food and ate too much.

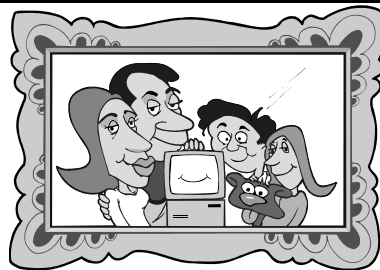
The location will be at Marty Richards house.

2086 Elmdale ave. Simi Valley

Date: December 15th.

Time: 6:30 PM

Please call Marty at 805-526-4414 to find out suggestions on what to bring.



WELCOME NEW MEMBERS

**Karla Johnson-Majedi
&
Mary Falkenstein**

Cont. on page 2 Col. 3

NOVEMBER TRAIL WORK PARTY

The weather was cool and damp for our work party at Corriganville Park. Six Trailblazers were joined by two scout leaders and 4 girl scouts.

Removal of trash, bottles and broken glass was performed on the Hummingbird Connector Trail, which leads to Foothill Park. Trail work was accomplished on the lower switchbacks of the Wildlife Corridor Trail. The last remaining patch of Arundo Grass near Camp Rotary was cut down and removed. Special thanks to Bill Cespedes for use of his pickup truck to transport the Arundo Grass to the Green Waste bin in the parking lot. He saved us a lot of work. Tree of Heaven trees at the east end of the parking lot were also cut down and removed.

Additionally, the non-native Arundo and Tree of Heaven stumps were sprayed with a herbicide, by the Rancho Simi Recreation and Parks Department, in order to suppress the regrowth of these highly invasive species.

We worked from 8:00-11:30

a nearby ridgeline, resulted in the conclusion that on the winter solstice of each year, usually December 21, 22 or 23. The sun would rise out of the top of that rock outcropping. Indeed, the view from each of those presumed shrines sighting through the notch in the ridge to the top of the pointed rock, looked much like sighting down the open sights of a rifle. The view of the winter solstice sunrise from the one remaining feature is associated with that rock outcropping.

Whether or not the Chumash held such a sighting device in any particular esteem is not known.

There is a similar feature on the Boeing Rocketdyne property that had a similar function during the winter solstice - also from multiple ceremonial sites. The rock exhibits what is thought by archaeologists who have examined it to be an aboriginal trail, worn in the sandstone rock, leading to the top of the rock. The presence of that trail suggests that the rock outcropping may have been an integral part of the power associated with the ceremonies performed at the shrines during the cosmological event each year.

The loop trail on the Sage Ranch Park goes right by the southern exposure of the rock. I have not yet examined the rock to determine if there is any evidence of a path to the top, of any use of fire at the summit, or of any other use by the Chumash people. Something else to investigate!

Mike Kuhn



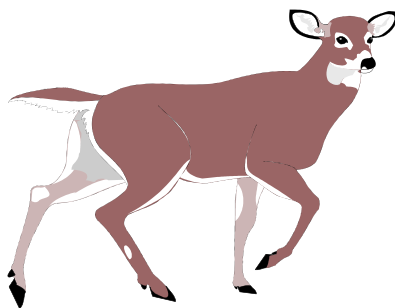
Finally New RSTB Shirts are Here!

We now have crewneck sweatshirts and Long Sleeve T's. These shirts will be available at the Holiday Party at Marty & Al Richards on December 15th. Hope to see you there!

- * Short Sleeve T's = \$12
- * Long Sleeve T's = \$15
- * Crewneck Sweatshirt = \$18

Colors: white, Dark Gray,
Light Gray, Light Blue

Lisa Klockenteger



and as usual, met at Chuy's after finishing. Many thanks to the following workers:

RANCHO SIMI TRAILBLAZERS

Arlene Altshuler, Phil Ankrum, Bill Cespedes, John Downey, Michael Kuhn and John Sabol.

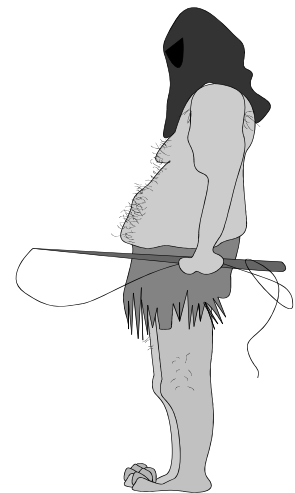
GIRL SCOUTS

Leaders - Rhonda Huddleston and Paula Clough.
Scouts - Michelle Bunn, Heather Clough, Rayna Huddleston and Jemma Lee.

The next work party will be on the Chumash Trail on December 18 and we will work from 8:00 AM to 12:00 PM. Hope to see you there.

Work Parties Vice Chair

John Sabol



The End



DECEMBER



Sun	Mon	Tue	Wed	Thu	Fri	Sat
			1	2 Chumash Trail Hike Meet at 6 PM see schedule	3	4 Sisar Canyon To White Ledge Hike Meet at 8 AM See schedule
5 Rocky Peak Trail Hike Meet at 4 PM See schedule	6	7	8	9 Chumash Trail Hike Meet at 6 PM see schedule	10	11 Happy Birthday Karla Johnson-Majedi Upper Sycamore Exploratory Hike Meet at 8 AM See schedule
12 Rocky Peak Trail Hike Meet at 4 PM See schedule	13 Happy Birthday Bill Cespedes	14	15 RSTB Christmas Party 6:30 PM <u>See page 1</u>	16 Chumash Trail Hike Meet at 6 PM see schedule	17	18 Chumash Trail Work Party. 8 AM to Noon See schedule
19 Rocky Peak Trail Hike Meet at 4 PM See schedule	20	21 Happy Birthday George Hebner	22 WINTER SOLSTICE	23 Chumash Trail Hike Meet at 6 PM see schedule	24	25 Happy Birthday Russ Young Leaders Choice Christmas Day Hike Meet at 8 AM See schedule
26 Rocky Peak Trail Hike Meet at 4 PM See schedule	27	28 Happy Birthday Norma Martinez	29	30 Chumash Trail Hike Meet at 6 PM see schedule	31	

RANCHO SIMI TRAIL BLAZERS

EXECUTIVE CHAIR:	MIKE KUHN	HM (805) 583-2345 WK (805)583-6776
TREASURER:	BILL FUNK	HM (805) 527-9339
PARK DISTRICT LIAISON:	COLLEEN JANSSEN	OFFICE (805) 584-4400
WORK PARTIES CHAIR:	BOB ALTIERI	HM (805) 526-6749
WORK PARTIES VICE CHAIR:	JOHN SABOL	HM (805) 583-2541
HIKING CHAIR:	ARLENE ALTSHULER	HM (805) 581-9735
HIKING VICE CHAIR:	LISA KLOCKENTEGER	HM (805) 237-1675
WAYS & MEANS CHAIR:	MARTY RICHARDS	HM (805) 526-4414
WAYS & MEANS VICE CHAIR:	CONNIE ANKROM	HM (805)526-2747
OUTDOOR EDUCATION CHAIR:	JIM RILEY	HM (805) 522-4268
COMMUNICATION / PUB.CHAIR:	BYERS (JOHN) DOWNEY	HM (805) 526-8588

-----cut out and return with your payment-----

MEMBERSHIP

Please enroll me as a New () or Renewing () member of the Rancho Simi Trail Blazers for the annual donation fee of:

Single.....\$10 Family..... \$15

Name(s) _____ Address _____
 _____ Birth Mo. _____ Day _____ Phone wk/hm _____

How did you find out about the RSTB _____

Please make out tax deductible member dues check for the year Sept.-1999/Sept.-2000 to:
“Rancho Simi Foundation” mail it to **“RSTB, P.O. Box 630399, Simi Valley, Ca 93063-0399**

Please list any extra names and birthdays of more than one member (Day & Month Only)
 Check out our Web Site at ...<http://home.pacbell.net/chaiyah/rstb.html>



RSTB
P.O. Box 630399
Simi Valley, CA 93063-0399
805 584-4400

 U.S. Postage
